

**BEDU**  
≡ POMPEN ≡

# In-Line Pumps



**SNLV-H**

**made for your process**



# SNLV-H

## IN-LINE PUMPS



### Handled Liquids

Clean or slightly contaminated low viscosity liquids without solid & fibrous particles.

### Technical Data

**Suction & Discharge Flange** — DN 40 ..... DN 250 mm

**Capacity** \_\_\_\_\_ up to 800 m<sup>3</sup>/h

**Head** \_\_\_\_\_ up to 95 m

**Speed** \_\_\_\_\_ up to 2900 rpm

**Operating Temperature** \_\_\_\_\_ -10 °C' up to +140 °C\*

**Casing Pressure (Pmax)** \_\_\_\_\_ 10 bar (16 bar) \*

(Pmax : Suction Pressure + Shut off Head)

(\*) The material of pumps differs according to the type of pumped liquid, operating temperature and pressure. Contact for detailed information

### Design Features

Volute casing, single stage, vertical in-line centrifugal pump with closed impeller and with separate own bearing bracket.

Suction and Discharge Flanges conform to EN 1092 - 2 / PN 16.

SNLV-H pumps are direct coupled with electric motors of IEC frame sizes with IE2 efficiency class (if requested IE3)

Due to the back-pull-out design, the complete bearing assembly including impeller and casing cover can be dismantled without removing the volute casing from the pipe system. (With spacer coupling application, also possible to take out the rotor group without dismantling the electric motor.)

Axial thrust is balanced by impeller balancing holes system.

All impellers are balanced dynamically according to ISO 1940 class 6.3.

Direction of rotation is clockwise viewed from driver end.

Bearings of SNLV-H type pumps are "life time grease lubricated" ball bearings.

### Shaft Sealing

Single mechanical seal, flushed by pumped liquid, uncooled and unbalanced.

### Pump Designation

**SNLV-H 100 - 250**

**Pump Type** \_\_\_\_\_

**Suction and Discharge Nozzles (DN-mm)** \_\_\_\_\_

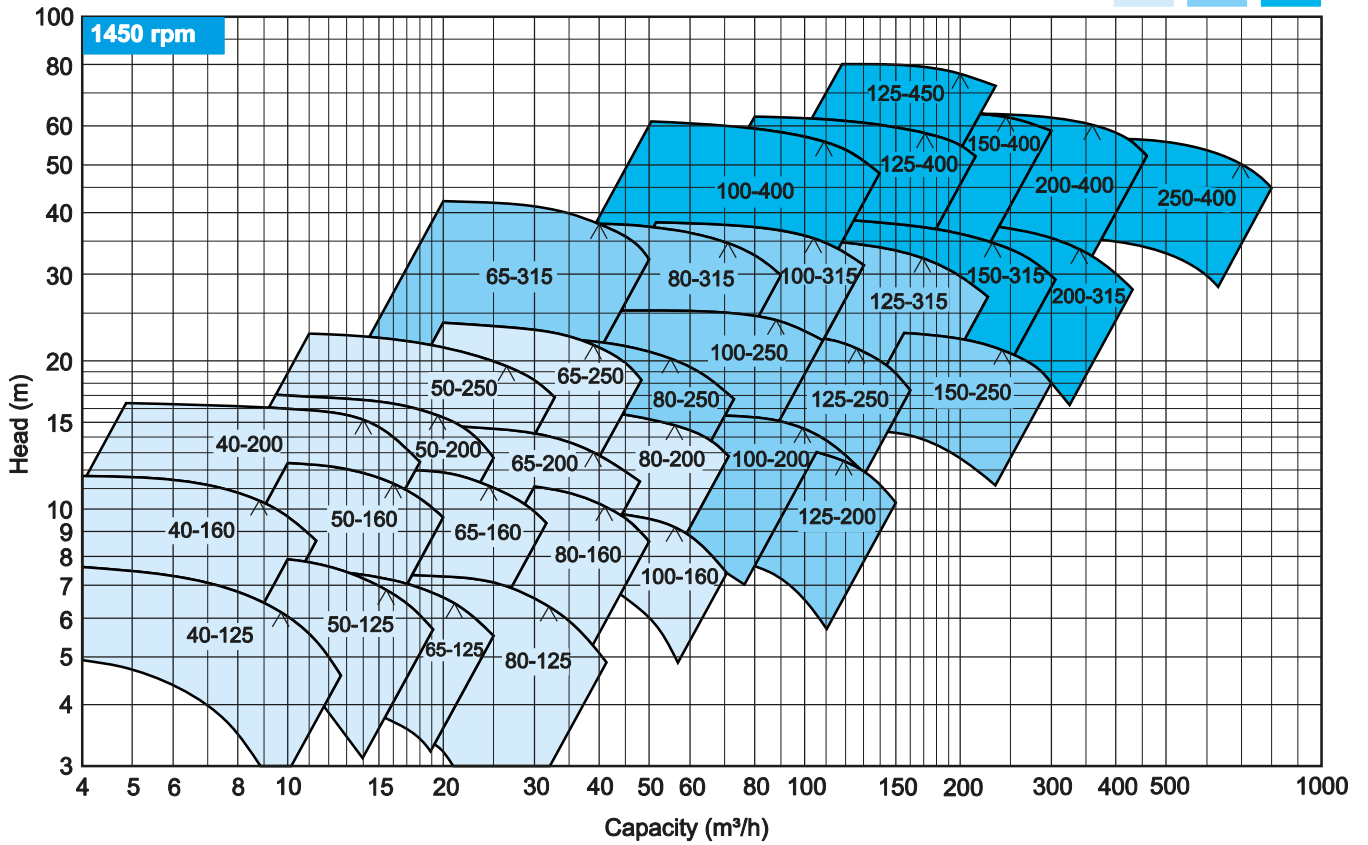
**Nominal Impeller Diameter (mm)** \_\_\_\_\_

# Field Chart

# SNLV-H

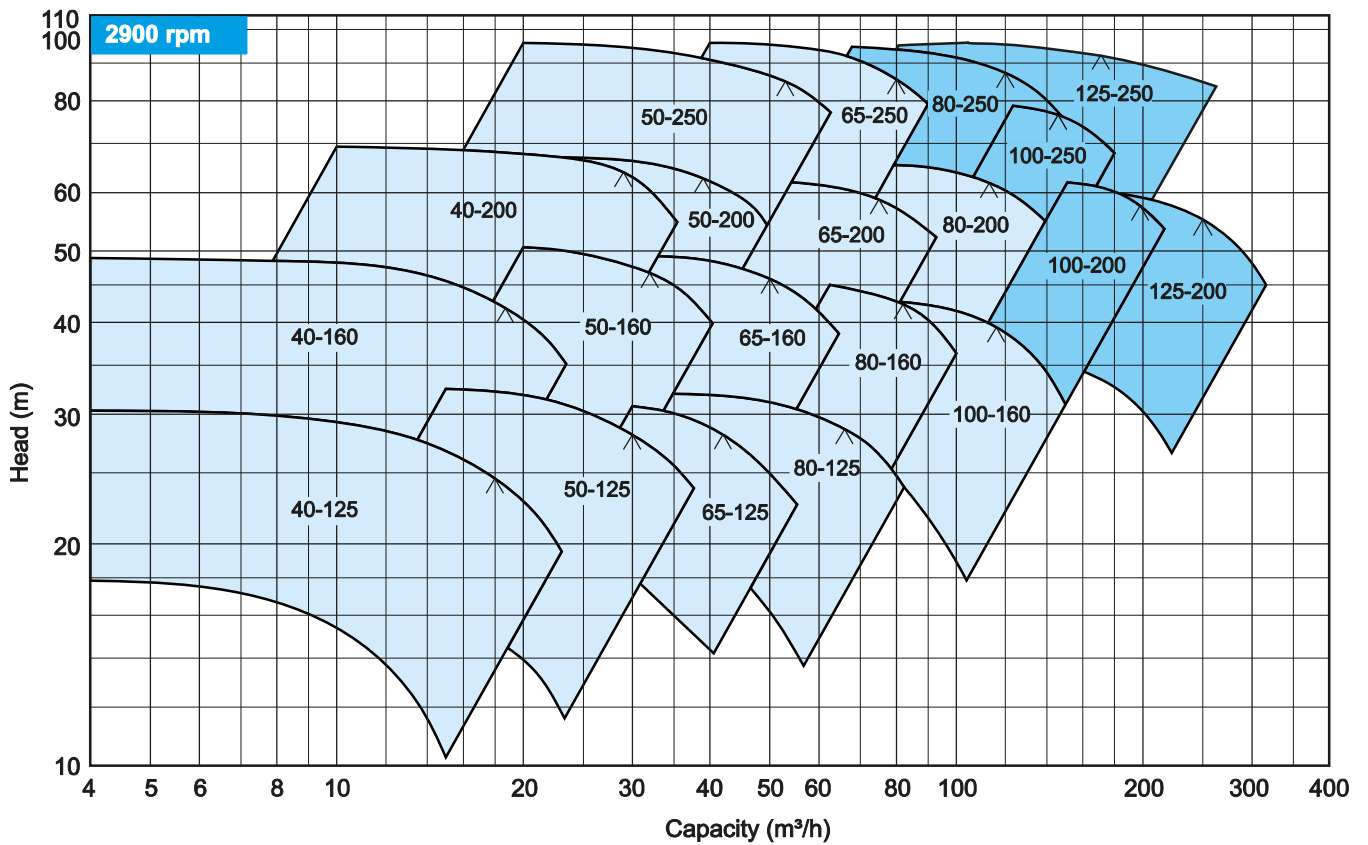
Grouped according to the shaft form

**A** **B** **C**

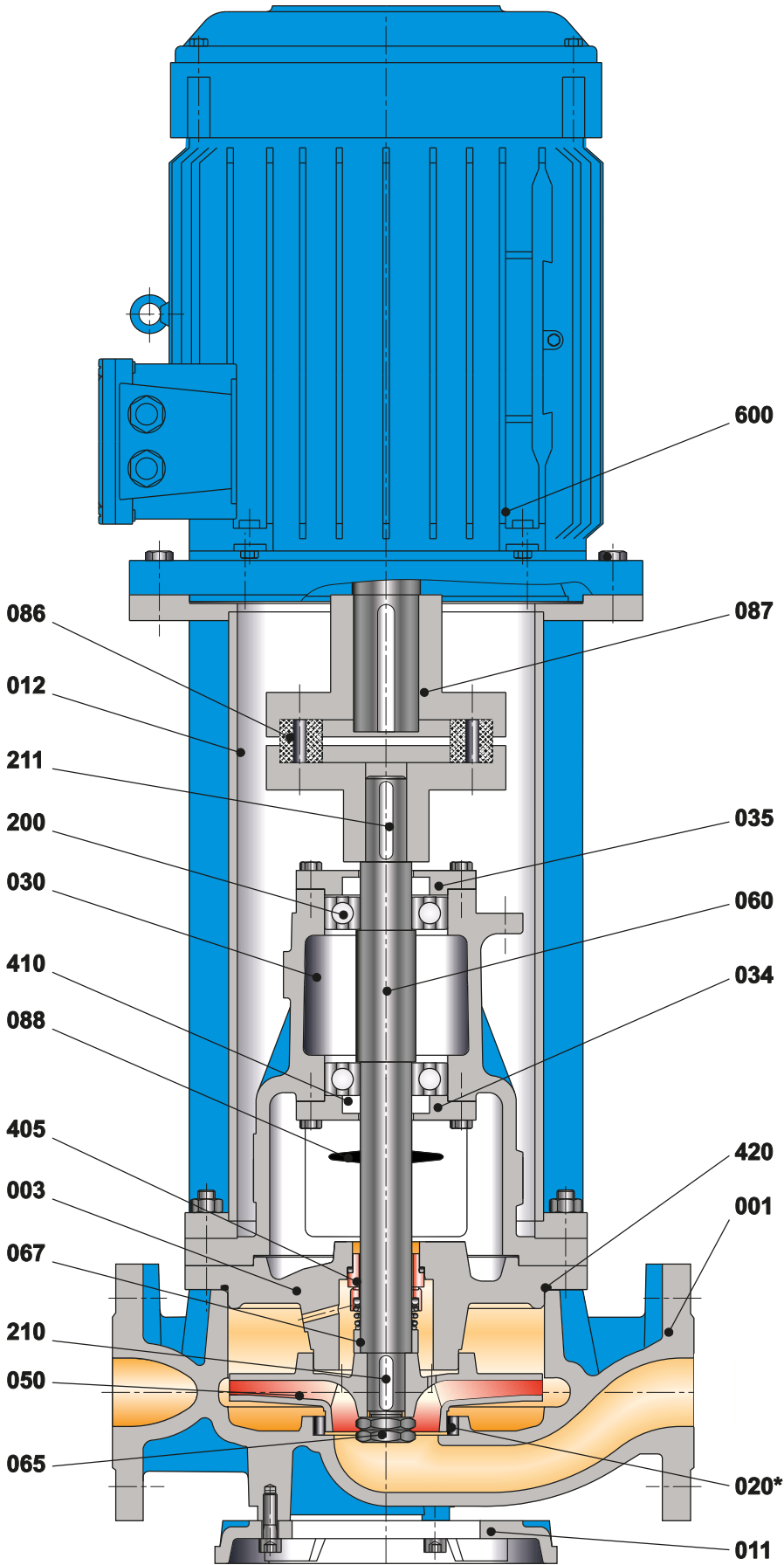


Grouped according to the shaft form

**A** **B**



Part List



- 001 Volute Casing
- 003 Casing Cover
- 011 Base Plate
- 012 Motor Pedestal
- \*020 Wear Ring
- 030 Bearing Bracket
- 034 Bearing Cover
- 035 Bearing Cover
- 050 Impeller
- 060 Pump Shaft
- 065 Impeller Nut
- 067 Spacer Sleeve
- 086 Coupling Rubber
- 087 Flexible Coupling
- 088 Thrower
- 200 Ball Bearing
- 210 Impeller Key
- 211 Coupling Key
- 405 Mechanical Seal
- 410 Lip Seal
- 420 O-Ring
- 600 Electric Motor

(\* ) Optional

Material Options

Part List	0.6025	0.7040	1.0619	1.4308	1.4309	1.4408	1.4409	1.4500	1.4517	1.4469	1.4317	2.1050.01	2.0975.01	1.4021	1.4301	1.4306	1.4401	1.4404	1.4462	
Volute Casing	●	○	○	○	○	○	○	○	○	○	○	○	○							
Casing Cover	●	○	○	○	○	○	○	○	○	○	○	○	○							
Impeller	●	○	○	○	○	○	○	○	○	○	○	○	○							
Pump Shaft														●	○	○	○	○	○	
Bearing Bracket	●	○																		
Wear Ring (casing)	○	○	○	○	○	○	○	○	○	○	○	○	○						○	
<b>Mechanical Seal (*)</b>														<b>EN 12756 / DIN 24960</b>						

(\*) Optional :Depending on customer requirement or request different types and brands of mechanical seals are applicable.

● manufacturing  
○ Optional

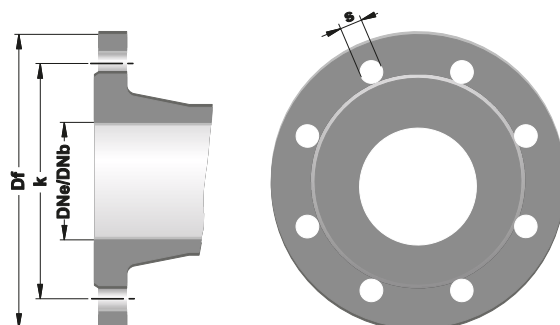
Material Equivalents

Description	DIN 17007	EN-DIN	ASTM
Cast iron	0.6025	GJL-250 (GG 25)	A 48 Class 40-B
Nodular cast iron	0.7040	GJS-400-15 (GGG 40)	A 536 Gr. 60-40-18
Cast steel	1.0619	GP240GH (GS-C 25)	A 216 Gr. WCB
Chrome nickel cast steel	1.4308	G-X5 Cr Ni 19-10	A 351/743/744 Gr. CF8
Chrome nickel cast steel (low carbon)	1.4309	G-X2 Cr Ni 19-11	A 351/743/744 Gr. CF3
Chrome nickel molybdenum cast steel	1.4408	G-X5 Cr Ni Mo 19-11-2	A 351/743/744 Gr. CF8M
Chrome nickel molybdenum cast steel (low carbon)	1.4409	G-X2 Cr Ni Mo 19-11-2	A 351/743/744 CF3M
Austenitic cast steel	1.4500	G-X7 Cr Ni Mo Cu Nb 25-20	A 351/743/744 (CN7M)
Austenitic-ferritic cast steel (duplex)	1.4517	G-X2 Cr Ni Mo Cu N 25-6-3-3	A 890 Gr. 1B (CD4MCuN)
Austenitic-ferritic cast steel (super duplex)	1.4469	G-X2 Cr Ni Mo N 26-7-4	A 890 Gr. 5A (CE3MN)
Martenzitic Stainless Cast Steel	1.4317	GX4 Cr Ni 13-4	A 351/743/744 (CA6NM)
Cast bronze (tin alloy)	2.1050.01	G-Cu Sn 10	B 584 C 90700
Cast bronze (nickel alloy)	2.0975.01	G-Cu Al 10 Ni	B 148 C 95800
Chrome steel	1.4021	X20 Cr 13	A 276 Type 420
Chrome nickel steel	1.4301	X5 Cr Ni 18-10	A 276 Type 304
Chrome nickel steel (low carbon)	1.4306	X2 Cr Ni 19-11	A 276 Type 304L
Chrome nickel molybdenum steel	1.4401	X5 Cr Ni Mo 17-12-2	A 276 Type 316
Chrome nickel molybdenum steel (low carbon)	1.4404	X2 Cr Ni Mo 17-12-2	A 276 Type 316 L
Duplex (austenitic-ferritic) steel	1.4462	X2 Cr Ni Mo N 22-5-3	A 276 S 31803

Flange Dimensions

DNe / DNb	Suction & Discharge (PN 16)			
	Df	k	s	n
40	150	110	19	4
50	165	125	19	4
65	185	145	19	4
80	200	160	19	8
100	220	180	19	8
125	250	210	19	8
150	285	240	23	8
200	340	295	23	12
250	405	355	28	12

" n " number of holes





The logo consists of the word "BEDU" in a large, bold, white sans-serif font, with "POMPEN" in a smaller, white sans-serif font below it. The text is centered within a dark teal square, which is itself centered within a white square border.

**BEDU**  
POMPEN

## made for your process

- Expert advice
- A customer-oriented organization that adapts to the requirements and wishes of your organization
- Innovative and customized solutions
- Breakdownservice, 24 hours a day, 7 days a week
- Technical service with extensive test facilities, working from our own workplace or at your location
- A fast and appropriate solution for all your issues
- Wide range of liquid pumps
- Repair, maintenance and revision

BEDU POMPEN B.V.  
Poort van Midden Gelderland Rood 10  
6666 LT HETEREN  
Nederland  
Telefoon +31 (0)88 4802 900  
E-mail [sales@bedu.eu](mailto:sales@bedu.eu)

[WWW.BEDU.NL](http://WWW.BEDU.NL)

BEDU BELGIUM B.V.B.A.  
Industriepark-West 75  
9100 SINT-NIKLAAS  
België  
Telefoon +32 (0)3 80 87 980  
E-mail [sales@bedu.eu](mailto:sales@bedu.eu)

[WWW.BEDU.BE](http://WWW.BEDU.BE)

