



The electropumps 6SDX, 6SDXL series comply with the European Regulation no. 547/2012.

Materials

| Components | 6SDX | 6SDXL | 8SDX | 8SDXL |
|-----------------|-----------------------------|----------------|-------------------------|----------------------------|
| External jacket | Cr-Ni steel | Cr-Ni-Mo steel | Cr-Ni steel | Cr-Ni-Mo steel |
| Suction lantern | AISI 304 | AISI 316L | AISI 304 | AISI 316 |
| Upper cover | Cr-Ni-Mo steel AISI 316 | | | |
| Delivery casing | Cr-Ni-Mo steel AISI 316L | | Cr-Ni steel AISI 304 | Cr-Ni-Mo steel AISI 316 |
| Strainer | Cr-Ni-Mo steel | | Cr-Ni-Mo steel | |
| Valve set | AISI 316 | | AISI 316 | |
| O-ring valve | NBR | | | |
| Shaft | Cr-Ni-Mo steel AISI 316 | | Cr-Ni-Mo steel AISI 329 | |
| Coupling set | Cr-Ni-Mo steel AISI 316/329 | | | |
| Diffuser | Cr-Ni steel | Cr-Ni-Mo steel | Cr-Ni steel | Cr-Ni-Mo steel |
| Stage casing | AISI 304 | AISI 316L | AISI 304 | AISI 316 |
| Impeller | Cr-Ni steel | Cr-Ni-Mo steel | Cr-Ni-Mo steel | |
| | AISI 304 | AISI 316L | AISI 316 | |
| Wear ring | Teflon (PTFE) | | | |
| Bearing bush | NBR | HNBR | NBR | HNBR |
| Cable guard | Cr-Ni-Mo steel | | | |
| Screws | AISI 316 | | | |

CS, CS-R Motor

| Components | CS-R 6", 8", CS 10" standard | I-CS-R 6", 8", I-CS 10" AISI 316 |
|----------------|-----------------------------------|--|
| External frame | AISI 304 (AISI 316Ti for 10") | Cr-Ni-Mo steel AISI 316 Ti |
| Motor flange | Cast iron GJL 200 EN 1561 | Cr-Ni-Mo steel AISI 316 |
| Shaft end | Steel AISI 431 (AISI 329 for 10") | AISI 316 (AISI 630 from 30 to 93kW) (AISI 429 for 10") |
| Thrust bearing | Oscillating pads | Oscillating pads |
| Bushings | Graphite (Bronze for 8" motor) | Graphite (Bronze for 8" motor) |

Construction

Submersible borehole pumps for 6" wells (DN 150 mm) and 8" (DN 200 mm).

6,8SDX: with external jacket and stages in stainless steel AISI 304.

6,8SDXL: with external jacket and stages in stainless steel AISI 316.

Impellers

| Radial impellers | Mixed flow impellers |
|------------------|-----------------------------------|
| 6SDX(L) 18 | 6SDX(L) 30-46-65 8SDX(L) 78-97 |

Connection: Screwed connection ISO 228

Delivery casing with built-in non-return valve.

Applications

For water supply.

For civil and industrial applications.

For fire fighting applications.

For irrigation.

Operating conditions

Liquid temperature up to 60 °C (90 °C for SDXL).

Max. sand quantity into the water: 100 g/m³.

Continuous duty.

Rewindable motor CS series

2-pole induction motor, 50 Hz (n ≈ 2900 rpm).

With water wetted winding in rewindable execution.

Sized for connection to the pumps according to NEMA Standards.

Standard voltages:

- three-phase 400 V; 400/690 V.

Voltage tolerance : +6% / -10%.

In order to limit both current and torque at each starting, for rated motor powers equal to or higher than 7.5 kW, one of the following types of starting is necessary: star/delta, soft starter, stator impedance or autotransformer.

Operating conditions motor

| Motor | Max. Liquid temperature | Cooling: minimum flow velocity | Max. starts per hour | Motor P2 |
|-------|-------------------------|--------------------------------|----------------------|-----------|
| 4CS | 35 °C | 0,08 m/s | 20 | all types |
| 6CS-R | 30 °C | 0,1 m/s | 15 | 4÷11 kW |
| | | 0,2 m/s | 15 | 13÷15 kW |
| | 25 °C | 0,2 m/s | 15 | 18,5 kW |
| | | 0,2 m/s | 13 | 22÷30 kW |
| 8CS-R | 25 °C | 0,1 m/s | 13 | 37 kW |
| | | 0,3 m/s | 6 | 45 kW |
| | | 0,3 m/s | 10 | 30÷45 kW |
| 10CS | 25 °C | 0,50 m/s | 8 | 51÷75 kW |
| | | | 6 | 92 kW |
| | | | 10 | all types |

Insulation class F for 4" motors, class E for 6-8" motors, PVC coated wire for 10" motors.

Motor suitable operation with frequency converter.

Protection IP 68.

Special features on request

- Other voltages.
- 60 Hz frequency.
- Other temperatures.
- Encapsulated motor **FK series**.

Designation

6 SDX L 30 / 17

Ø of the well in inches _____

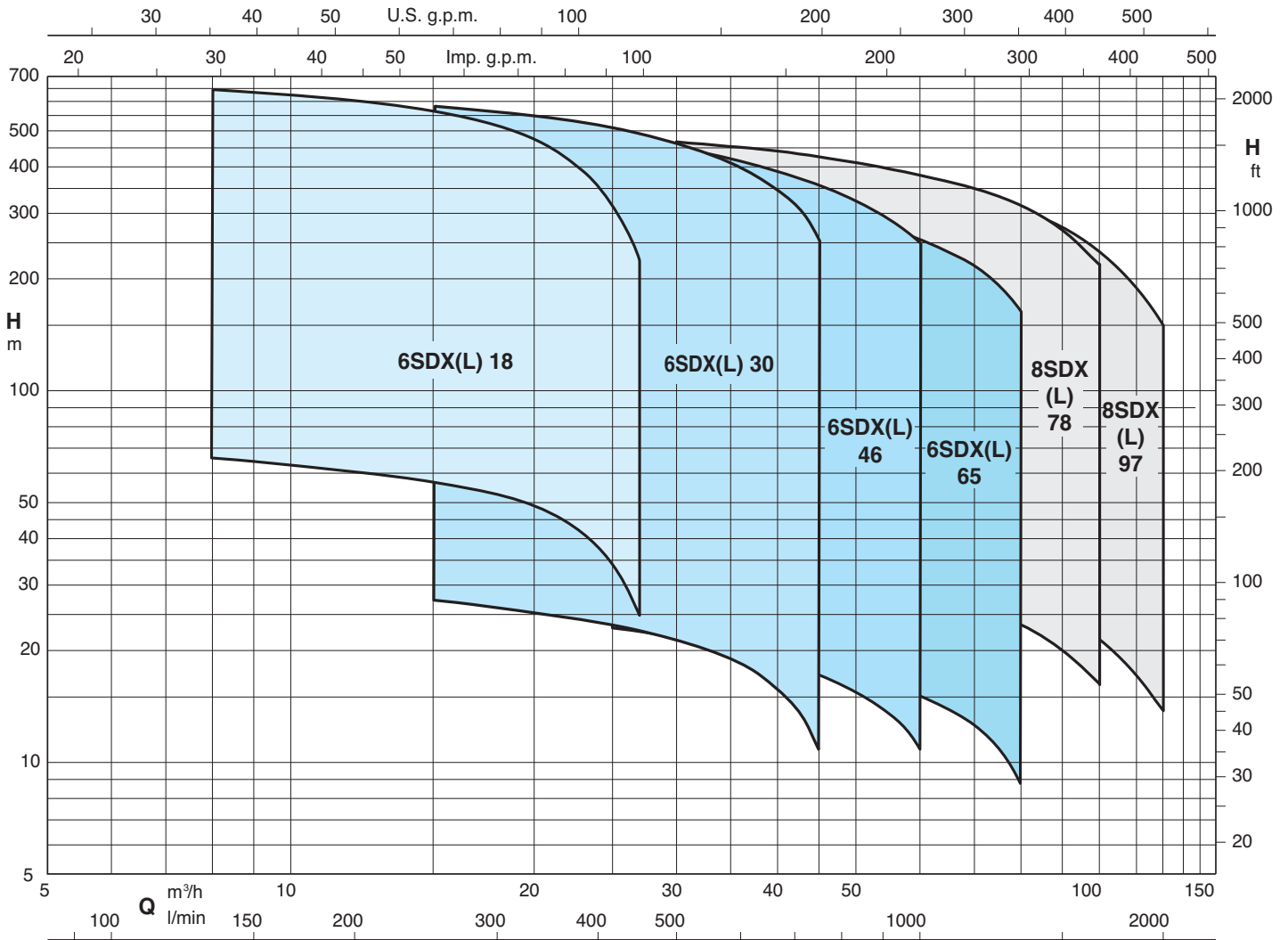
Series _____

Cr-Ni-Mo steel AISI 316 construction _____

Stage identification _____

Number of stages _____

Coverage chart $n \approx 2900$ rpm



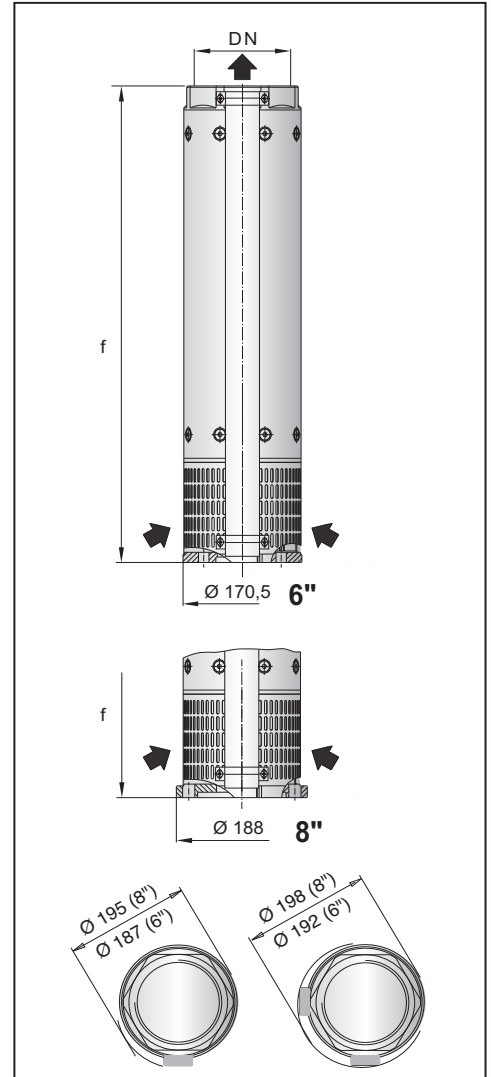
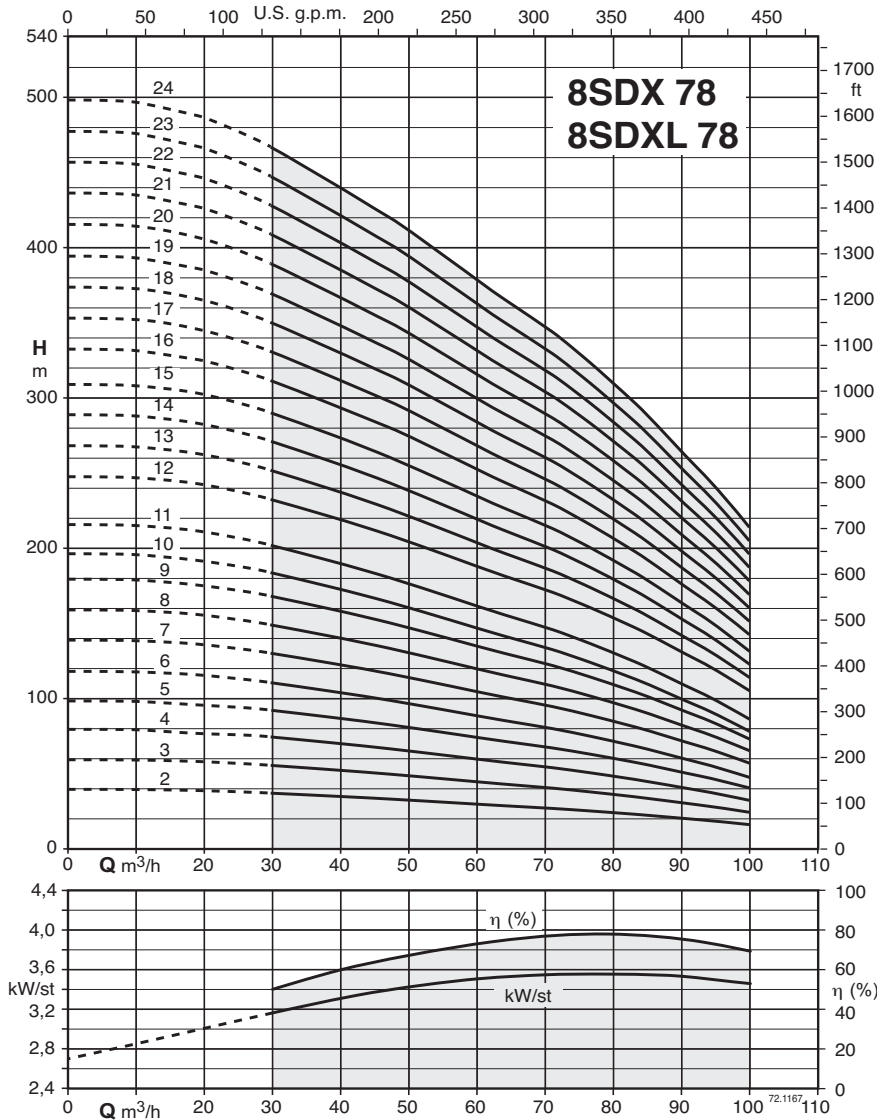
72.1161_10

8SDX 78

Submersible borehole pumps for 8" wells



Characteristic curves, performance $n \approx 2900$ rpm, dimensions and weights



| 3 ~ | P ₂ | | Q | n ≈ 2900 rpm | | | | | | | | | | | DN | Motor | | f | 8SDXL | | | | | | | |
|--------------------------|----------------|----------|-------|----------------|------|------|------|------|------|------|------|------|-----|-----|-----|-------|-----|-----|-------|-----|-----|-----|------|-----|-------|-----|
| | kW | HP | | H _m | | | | | | | | | | | | CS-R | FK | | | mm | kg | | | | | |
| | | | | 0 | 30 | 40 | 50 | 60 | 70 | 80 | 90 | 100 | 110 | 120 | | | | | | | | 130 | 140 | 150 | 160 | 170 |
| | | | m³/h | 0 | 30 | 40 | 50 | 60 | 70 | 80 | 90 | 100 | 110 | 120 | 130 | 140 | 150 | 160 | 170 | 180 | 190 | 200 | mm | mm | mm | kg |
| | | | l/min | 0 | 500 | 666 | 833 | 1000 | 1166 | 1333 | 1500 | 1666 | | | | | | | | | | | | | | |
| 8SDX 78/2 - 8SDXL 78/2 | 7,5 | 10 | | 39,9 | 37,1 | 34,9 | 32,6 | 29,7 | 27,1 | 24,3 | 20,4 | 16,3 | | | | | | | | | | | 644 | | 31,5 | |
| 8SDX 78/3 - 8SDXL 78/3 | 11 | 15 | | 59,8 | 55,7 | 52,3 | 48,9 | 44,6 | 40,7 | 36,4 | 30,6 | 24,4 | | | | | | | | | | | 770 | | 36,5 | |
| 8SDX 78/4 - 8SDXL 78/4 | 15 | 20 | | 79,7 | 74,3 | 69,7 | 65,1 | 59,4 | 54,3 | 48,6 | 40,9 | 32,6 | | | | | | | | | | | 896 | | 41,5 | |
| 8SDX 78/5 - 8SDXL 78/5 | 18,5 | 25 | | 99,6 | 92,9 | 87,1 | 81,4 | 74,3 | 67,9 | 60,7 | 51,1 | 40,7 | | | | | | | | | | | 1022 | | 46,5 | |
| 8SDX 78/6 - 8SDXL 78/6 | 22 | 30 | | 120 | 111 | 105 | 97,7 | 89,1 | 81,4 | 72,9 | 61,3 | 48,9 | | | | | | | | | | | 1148 | | 51 | |
| 8SDX 78/7 - 8SDXL 78/7 | 26 (30) | 35 (40) | | 140 | 130 | 122 | 114 | 104 | 95 | 85 | 71,5 | 57 | | | | | | | | | | | 1274 | 137 | 56 | |
| 8SDX 78/8 - 8SDXL 78/8 | 30 | 40 | | 156 | 146 | 138 | 128 | 117 | 107 | 94,5 | 80 | 63,3 | | | | | | | | | | | 1400 | 6" | 61 | |
| 8SDX 78/9 - 8SDXL 78/9 | 37 | 50 | | 176 | 164 | 155 | 144 | 132 | 120 | 106 | 90 | 71,2 | | | | | | | | | | | 1526 | 6" | 66 | |
| 8SDX 78/10 - 8SDXL 78/10 | 37 | 50 | | 195 | 183 | 173 | 160 | 147 | 134 | 118 | 100 | 79,1 | | | | | | | | | | | 1652 | 6" | 71 | |
| 8SDX 78/11 - 8SDXL 78/11 | 45 | 60 | | 215 | 201 | 190 | 176 | 162 | 147 | 130 | 110 | 87 | | | | | | | | | | | 1778 | 6" | 76 | |
| 8SDX 78/12 - 8SDXL 78/12 | 45 | 60 | | 248 | 232 | 218 | 203 | 187 | 171 | 154 | 130 | 105 | | | | | | | | | | | 1909 | 6" | 82 | |
| 8SDX 78/13 - 8SDXL 78/13 | 51 (55) | 70 (75) | | 268 | 251 | 237 | 220 | 203 | 185 | 166 | 141 | 114 | | | | | | | | | | | 2035 | 6" | 87 | |
| 8SDX 78/14 - 8SDXL 78/14 | 51 (55) | 70 (75) | | 289 | 271 | 255 | 237 | 218 | 200 | 179 | 152 | 122 | | | | | | | | | | | 2161 | 6" | 92 | |
| 8SDX 78/15 - 8SDXL 78/15 | 55 | 75 | | 310 | 290 | 273 | 254 | 234 | 214 | 192 | 163 | 131 | | | | | | | | | | | 2287 | 6" | 97 | |
| 8SDX 78/16 - 8SDXL 78/16 | 59 (75) | 80 (100) | | 332 | 312 | 293 | 274 | 252 | 232 | 206 | 176 | 143 | | | | | | | | | | | 2413 | 6" | 101,5 | |
| 8SDX 78/17 - 8SDXL 78/17 | 66 (75) | 90 (100) | | 353 | 332 | 311 | 292 | 268 | 247 | 219 | 187 | 152 | | | | | | | | | | | 2539 | 6" | 106,5 | |
| 8SDX 78/18 - 8SDXL 78/18 | 66 (75) | 90 (100) | | 374 | 351 | 329 | 309 | 284 | 261 | 232 | 198 | 161 | | | | | | | | | | | 2665 | 8" | 111,5 | |
| 8SDX 78/19 - 8SDXL 78/19 | 75 | 100 | | 394 | 371 | 348 | 326 | 299 | 276 | 245 | 209 | 170 | | | | | | | | | | | 2791 | 8" | 116,5 | |
| 8SDX 78/20 - 8SDXL 78/20 | 75 | 100 | | 415 | 390 | 366 | 343 | 315 | 290 | 258 | 220 | 179 | | | | | | | | | | | 2917 | 8" | 121 | |
| 8SDX 78/21 - 8SDXL 78/21 | 75 | 100 | | 436 | 409 | 385 | 361 | 331 | 304 | 271 | 231 | 187 | | | | | | | | | | | 3043 | 8" | 126 | |
| 8SDX 78/22 - 8SDXL 78/22 | 92 | 125 | | 457 | 428 | 403 | 378 | 347 | 318 | 284 | 242 | 196 | | | | | | | | | | | 3169 | 8" | 131 | |
| 8SDX 78/23 - 8SDXL 78/23 | 92 | 125 | | 478 | 448 | 422 | 395 | 363 | 333 | 297 | 253 | 205 | | | | | | | | | | | 3295 | 8" | 136 | |
| 8SDX 78/24 - 8SDXL 78/24 | 92 | 125 | | 499 | 467 | 440 | 412 | 379 | 347 | 310 | 264 | 214 | | | | | | | | | | | 3421 | 8" | 141 | |

P₂ Rated motor power output

(...) FK motor rated power output

H Total head in m

Tolerances according to UNI EN ISO 9906:2012

